

STANDARD F U-Albumin FIA



» Background

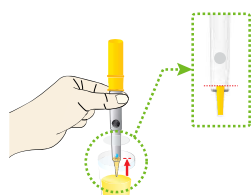
STANDARD F U-Albumin FIA is for quantitative measurement of microalbumin in human urine. This test is to aid to the prediction of diabetic nephropathy and cardiovascular diseases (CVD).

» Product Specification

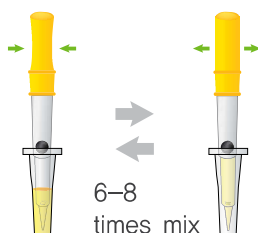


STANDARD F U-Albumin FIA	
Intended use	Quantitative measurement of microalbumin
Specimen type	Random urine
Specimen volume	3 µl
Measurement range	5 – 250 mg/L
Reference range	< 20 mg/L (Normal) 20 - 200 mg/L (Microalbuminuria) > 200 mg/L (Macroalbuminuria or proteinuria)
Testing time	5 mins
Storage condition	2 – 30°C / 36 - 86°F

» Test Procedure



Collect the 3µl of urine sample with the Spotit™ (Yellow).

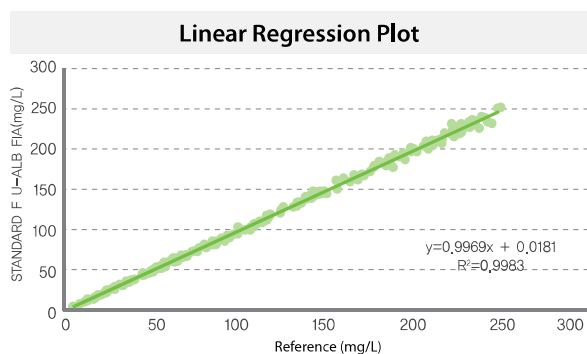


Mix the sample with the extraction buffer and collect all the mixture with the Spotit™ (Yellow).



Apply the sample mixture into the sample well of the test device.

» Method Comparison



Reference method vs STANDARD F U-Albumin FIA

Correlation with Immunoturbidimetric assay $y=0,9969x - 0,0051;$
 $R^2=0,9983, n=210$

CV% < 7%

Differ(%) within 10%

» Ordering Information

Category	Product	Pack Size	CAT No.
Chronic disease	STANDARD F U-Albumin FIA	20 Tests	10UAL10B
	STANDARD F U-Albumin Control	Lv1 x 10 / Lv2 x 10	10UALC10