

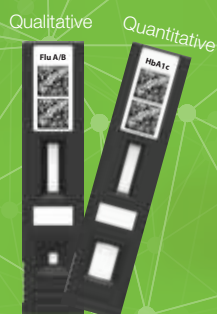
STANDARD F

Fluorescent Immunoassay System

STANDARD F100

STANDARD F200

STANDARD F2400






STANDARDTM

Connectivity with Mobile, Cloud and LIS/HIS



STANDARD F Specification

Series	F 100	F 200	F 2400
Image			
Test method	Fluorescent immunoassay		
Analysis	Quantitative & Qualitative test		
Test capacity	1 test each	1 test each	70 Tests per hour Random access
Quick test mode	Available	Available	Not Available
Power	AC/DC adapter or Battery(AA x 4)	AC/DC adapter	Power Cable (SMPS adapted)
Display	Graphic LCD	7" Color Touch Screen	10" Color Touch Screen
Printer	External	Built-in	Built-in
LIS /HIS connectivity	Bluetooth classic	<ul style="list-style-type: none"> HL7 v2.6(PCD-01) POCT1-A 	<ul style="list-style-type: none"> HL7 v2.6(PCD-01) POCT1-A
Auto-ID	2D barcode	2D barcode	2D barcode
Dimension (mm)	105 x 135 x 100	200 x 240 x 205	510 x 566 x 297
Accessories	Thermal printer	Mouse/keyboard Barcode scanner	Mouse/keyboard Barcode scanner
Weight	0.7 kg	2.5 kg	20.0 kg

Advantages of STANDARD F

User friendly interface
7" Color Touch Screen

Convenient report
Built-in Printer

Compact desktop
200 x 240 x 205
2.5 kg

Graphic LCD
Result is presented clearly and concisely

Portable system
Battery(AA x 4)
or AC/DC adapter

Minimized risk of contamination
Keep the entrance shut unless the testing is in progress. The dust cover protects against contamination.

Variable test parameters
23 test parameters are available now

Convenient process
Auto coding procedure by recognizing 2D barcode

Hand held size
105 x 135 x 100
700 g



- Connectivity**
- Direct LIS/HIS
 - HL7 v2.6(PCD-01)
 - POCT1-A



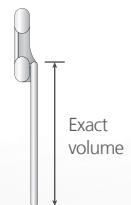
Calibration Set



Control Bead



Control Swab



Exact volume

- Reliable result**
Provide Calibration Set and Control reagent having more confidence in the result.

- Accurate result**
Take an accurate collection with Fixed volume dropper.

STANDARD F Analyzers are qualitative and quantitative fluorescent immunoassay systems and have been designed for easy and reliable measuring of diverse parameters. STANDARD F series offers 3 different models that can be used depending on your workflow requirements. **Rapid, highly accurate and reliable results help you to reduce uncertainty of treatment and make better the quality of patients care.**

Technical Advantages

1. Simple and easy to use

Familiar lateral flow test platform

2. Europium-based fluorescent chemistry

Large Stoke's shift permits sensitive fluorescence detection and narrow emission peak permits multiplex detection.

3. Random access and No-coding via 2D barcode system

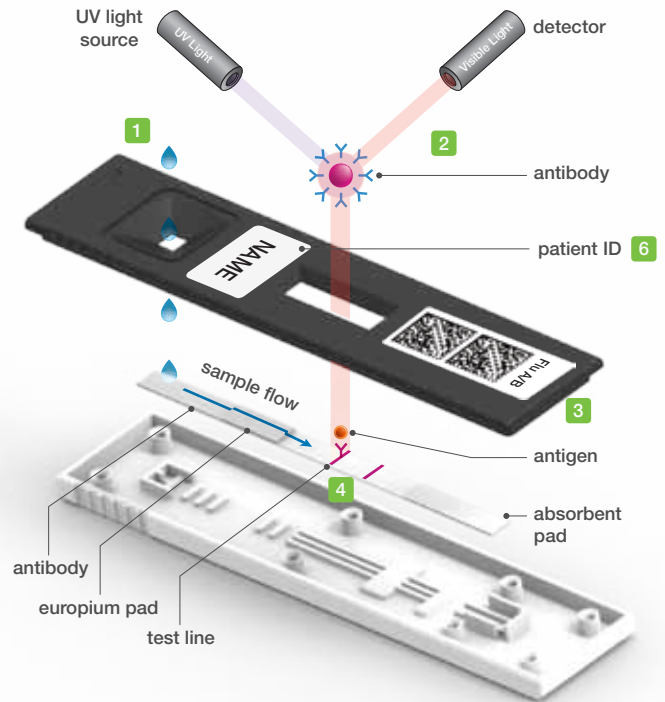
Automatic strip recognition (item, Lot No., serial No., coding information, expiry date)

4. Internal quality control

The control line checks that the test has progressed completely and correctly.

5. Time saving by early detection

In case of high titer samples, the analyzer automatically shows the test results in 1.5 minutes. (Influenza A/B)



6. Name awareness

STANDARD F Analyzer scans and prints a handwritten patient ID on the device, which allows of double checking the patient ID labeled on the sample.



Simple Test Procedure

STANDARD TEST mode

Automated procedure for single test



Insert the strip to initiate test processing.



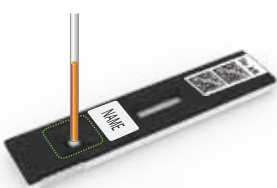
Apply the specimen into a strip.



Read the result when completed.

READ ONLY mode (only for the qualitative test items)

High-throughput procedure for multiple tests



Apply the specimen into a strip.



Leave the strip outside of the analyzer. Wait for the required time.



Insert the strip into the analyzer. It will take less than 1 minute for the result.

STANDARD F Enables Accurate Detection of Diseases

Outstanding Sensitivity of Qualitative FIAs - STANDARD F Influenza A/B FIA



STANDARD F Influenza A/B FIA is at least 4 times more sensitive than commercialized ICT

Influenza A		ICT	STANDARD F
No.	PFU/ml		
1	310,000	+	+
2	31,000	+	+
3	3,100	-	+
4	310	-	+
5	155	-	+
6	78	-	+
7	39	-	+/-
8	19	-	-

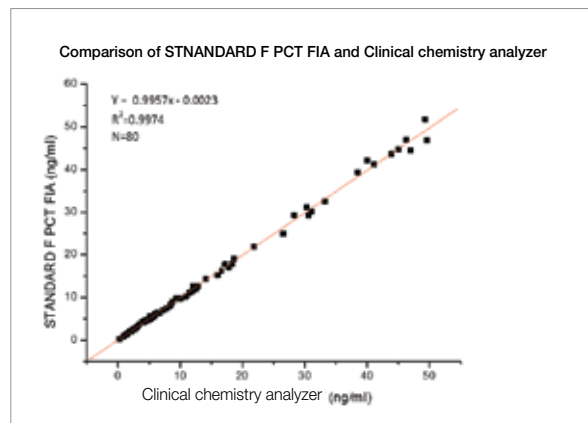
Influenza B		ICT	STANDARD F
No.	PFU/ml		
1	22,000	+	+
2	2,200	+	+
3	220	-	+
4	22	-	+
5	11	-	+/-
6	6	-	-

Highly Accurate Result of Quantitative FIAs - STANDARD F PCT FIA



There is a high correlation between STANDARD F and clinical chemistry analyzer

Slope	Correlation	CV
0.9957	0.9987	10%



STANDARD F Covers a Wide Scope of Medical Diagnostic Test



Ordering Information

STANDARD F Analyzers

Cat No.	Description	Unit	Printer	Weight	W(mm)/L(mm)/H(mm)
10FA10	F100	1	External	0.7 kg	105 x 135 x 100
10FA20	F200	1	Built-in	2.5 kg	200 x 240 x 205
10FA24	F2400	1	Built-in	20.0 kg	510 x 566 x 297

STANDARD F Tests

Category	Cat. No.	Test item	Sample type	Sample volume	Time to result	Type	Test /kit
Respiratory disease	10INF10D	Influenza A/B FIA	Nasal swab	-	1.5~10 mins	QL	25
	10RSV10D	RSV Ag FIA	Nasopharyngeal swab	-	5~15 mins	QL	25
	10STR10D	Strep A Ag FIA	Throat swab	-	5 mins	QL	25
	10LEG10D	<i>Legionella</i> Ag FIA	Urine	100 μ l	5~15 mins	QL	25
	10SPN10D	<i>S. pneumoniae</i> Ag FIA	Urine	100 μ l	5~10 mins	QL	25
Vector borne disease	10ZK10D	Zika Ag FIA	WB/S/P	100 μ l	15 mins	QL	25
	10ZK20D	Zika IgM/IgG FIA	WB/S/P	10 μ l	15 mins	QL	25
	10DEN10D	Dengue NS1 Ag FIA	WB/S/P	100 μ l	15 mins	QL	25
	10DEN20D	Dengue IgM/IgG FIA	WB/S/P	10 μ l	15 mins	QL	25
	10CHI10D	Chikungunya IgM/IgG FIA	WB/S/P	10 μ l	15 mins	QL	25
Hepatitis	10HCV10D	HCV FIA	WB/S/P	10 μ l	15 mins	QL	25
Cardiac marker	10CKM10B	CK-MB FIA	WB/P	100 μ l	15 mins	QN	20
	10TNI10B	TnI FIA	WB/P	100 μ l	15 mins	QN	20
	10HSC10B	hs-CRP	WB/S/P	5 μ l	3 mins	QN	20
	10DDI10B	D-dimer FIA	WB/P	10 μ l	3 mins	QN	20
Inflammation	10CRP10B	CRP	WB/S/P	5 μ l	3 mins	QN	20
	10PCT10B	PCT FIA (Serum)	S	50 μ l	15 mins	QN	20
	10PCT20B	PCT FIA	WB/S/P	100 μ l	15 mins	QN	20
Chronic disease	10A1C10B	HbA1c	WB	5 μ l	3 mins	QN	20
	10UAL10B	U-Albumin FIA	Urine	3 μ l	5 mins	QN	20
Hormone	10BHC10B	β -hCG FIA	WB/S	100 μ l	WB: 10 mins S: 5 mins	QN	20
	10TSH10B	TSH FIA	S/P	100 μ l	15 mins	QN	20
Tumor marker	10PSA10B	PSA FIA	WB/S/P	WB: 10 μ l S/P: 100 μ l	10 mins	QN	20

- Storage Temperature: 2-30°C/36-86°F - WB: Whole blood, S: Serum, P: Plasma, QL: Qualitative, QN: Quantitative

STANDARD F Controls

Cat No.	Description	Test/kit	Cat No.	Description	Test/kit
10INFC10	Influenza A/B Control	10T / kit	03ACS10	SDB HbA1c Control	10T / kit
10RSVC10	RSV Ag Control	10T / kit	10UALC10	U-Albumin Control	10T / kit
10STRC10	Strep A Ag Control	10T / kit	03CCS10	SDB CRP Control	10T / kit
10LEGC10	<i>Legionella</i> Ag Control	10T / kit	10PCTC10	PCT Control	10T / kit
10SPNC10	<i>S.pneumoniae</i> Ag Control	10T / kit			

- Storage Temperature: 2-30°C/36-86°F

Available Soon

HIV-1/2 Ab, HBsAg, Adenovirus Ag, *C. difficile* A/B GDH, Vitamin D, Cystatin C, AFP, CEA, FOB, LH, T3, T4

Head Office C-4&5Floor, 16, Deogyong-daero 1556beon-gil, Yeongtong-gu, Suwon-si, Gyeonggi-do, 16690, REPUBLIC OF KOREA
Factory 74, Osongsaengmyeong 4-ro, Osong-eup, Heungdeok-gu, Cheongju-si, Chungcheongbukdo, 28161, REPUBLIC OF KOREA

Tel +82-31-300-0400 **Fax** +82-31-300-0499 **E-mail** sales@sdbiosensor.com **Website** www.sdbiosensor.com
 LEF-FSYST-EN / SDC.1710 © 2017 SD BIOSENSOR. All rights reserved.