

STANDARD F LH FIA



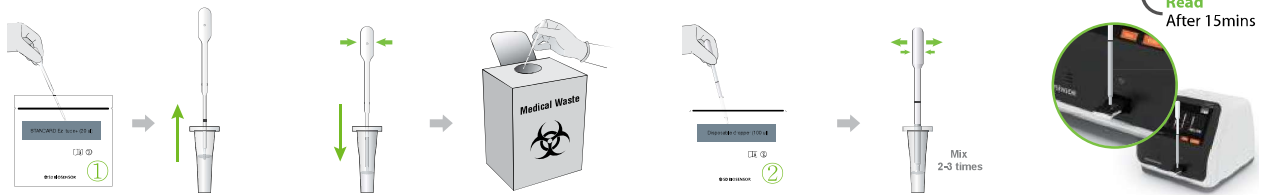
» Background

STANDARD F LH FIA is a fluorescent immunoassay for the quantitative measurement of LH level in human serum, plasma and whole blood. This test is performed to help evaluate fertility issues, function of reproductive organs (ovaries or testicles), or to detect the ovulation.

» Product Specification

STANDARD F LH FIA	
Intended use	Quantitative measurement of LH level to detect the ovulation in women
Specimen type	Whole blood, Serum, Plasma
Specimen volume	20 µl
Measurement range	1 – 100 mIU/mL
Reference range	14.0 – 95.6 mIU/mL (during ovulation phase)
Testing time	15 mins
Storage condition	2 – 30°C / 36 - 86°F

» Test Procedure



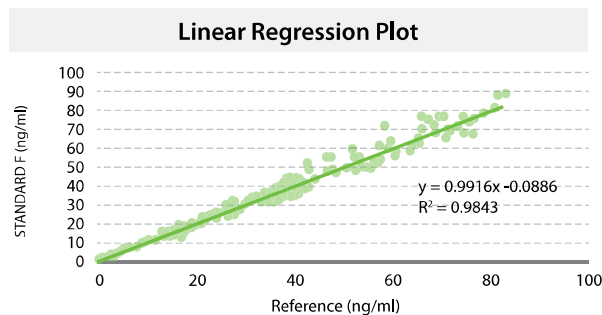
Collect 20 µl of sample with a STANDARD Ezi tube+ (20 µl).

Dispense collected sample into the extraction buffer tube. Then, discard the used STANDARD Ezi tube+ (20 µl).

Mix sample and buffer 2-3 times with the disposable dropper (100 µl). Then collect 100 µl of sample mixture.

Apply the sample mixture into the sample well of the test device and immediately press the start button.

» Method Comparison



Reference method vs STANDARD F LH FIA

Correlation vs Stago	$y=0.9916x + 0.0866$; $r=0.9921$; $n=210$
CV%	QCL=8.3% / QCM=8.0% / QCH=8.2%
Differ(%)	Within 15%

» Ordering Information

Category	Product	Pack Size	CAT No.
Hormone	STANDARD F LH FIA	20 Tests	10LH10B
	STANDARD F LH Control	Lv1 x 10 / Lv2 x 10	10LHC10