

# STANDARD F iFOB FIA

STANDARD™ F iFOB FIA is a highly sensitive fluorescent immunoassay test for the quantitative measurement of faecal occult blood level in faeces.

- Early detection of lower GI-tract bleeding
- Easy & fast test procedure
- Up to 60 tests/hour with F2400 Analyzer



## Product Specification

Intended use	Quantitative measurement of human Hb level for screening of GI-tract bleeding
Specimen type	Faeces
Specimen volume	3 drops
Measurement range	25 – 1,000 ng/mL (5-200 ug Hb/g faeces)
Measuring time	5 mins
CV%	<10%
Cut-off value	<b>&lt;100 ng/mL (25 ug Hb/g faeces)</b> *Available to set different cut-off values by the clinician
Storage condition	2 – 30°C / 36 - 86°F (Room temperature)

## Ordering Information

Category	Product	Pack Size	CAT No.
Tumor markers	STANDARD F iFOB FIA	20 Tests	10IFO10B
	STANDARD F iFOB FIA	50 Tests	10IFO10C
	iFOB Control	Lv1 X 10 / Lv2 X 10	10IFOC10

# Fast & Reliable Quantitative Faecal Occult Blood Detection

## Reliable

- Wide range quantitative FOB test (25 – 1,000 ng/mL)
- Individual cut-off value is able to set by the clinician according to the medical or geological circumstances
- Only detect human Hb – no dietary restriction prior testing

## Fast & Easy

- Final result within 5 mins
- Convenient sample collection tool
- Simple test procedure – no need special training

## High throughput quantitative iFOBT with F2400 Analyzer



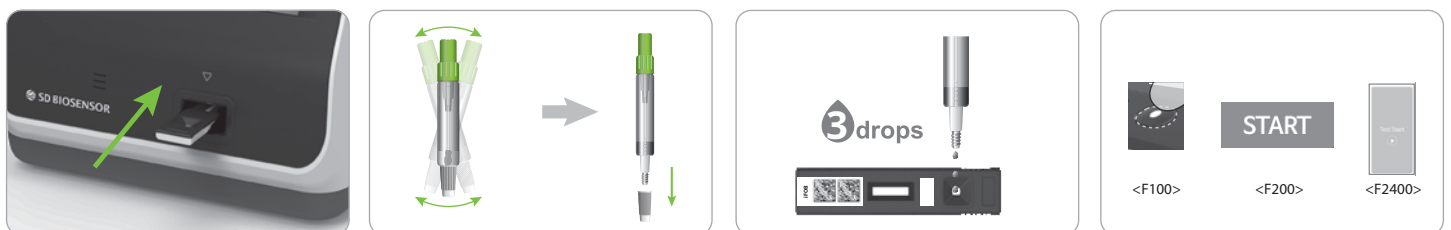
## Convenient Sample collection & Test procedure

### Sample collection procedure



- 1 Open the green cap-stick, and stab 5-6 sites of the faecal sample. (Do not scoop the sample)
- 2 Close the green cap tightly, and shake the tube several times vigorously.
- 3 Write the patient information on the Patient ID Label, and attach it on the Sample collection tube.
- 4 Store the Sample collection tube into the zipper bag provided, and submit it to your healthcare provider.

### Test procedure



- 1 Insert a iFOB FIA test device into the testing slot.
- 2 Shake the Sample collection tube several times, and open the white cap.
- 3 Dispense 3 drops of sample mixture into the sample well of the test device.
- 4 After applying the sample, press the START button immediately. The analyzer will automatically display the test result within 5 minutes.