

## epMotion® automated pipetting system

### General product features

- Pipetting range from 1 µl to 1,000 µl
- Best pipetting accuracy of all automated systems available
- Compatible with tubes and plates up to 384 wells
- Calibrated single-channel and multi-channel pipetting tools
- Completely contained housing including door safety mechanism
- Optical sensor\* for identification of labware, tips and reagent volumes
- Compact control panel for easy programming
- PC software optional tools

\* Patent pending

### 5075 models options:

- Plate gripper
- Up to three temperature control positions

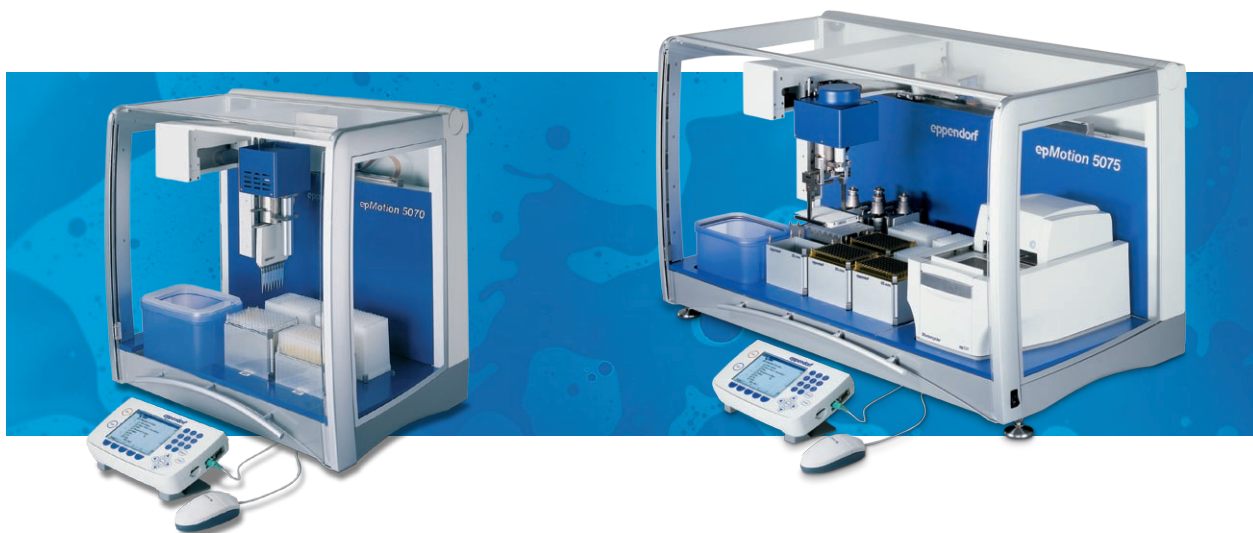
### Description

epMotion automates all your pipetting tasks, delivers most accurate pipetting and relief from tedious bench work for everyone, everyday. Whether it's sample or reagent transfer, assay set-up or nucleic acid extraction, even with the smallest sample numbers any application will benefit from automation. Pipetting is more accurate, reproducible and completely standardized. Automated pipetting is totally hands free, creating a better and more ergonomic workplace. With four models, two instrument sizes and multiple pipetting deck combinations to choose from, epMotion is the perfect companion for your workload. Transition from manual protocols is simple with predefined protocols and the powerful labware database ensures that virtually any tube or plate can be used.

The innovative control panel with keyboard, mouse and color display is particularly user friendly, and eliminates the need for a PC. However, for those who prefer, PC software is available. Whatever you choose, the simple programming structure makes it easy to adopt to daily changing sample numbers.

### epMotion selection guide

epMotion	Capacity	Applications examples
5070	4-position deck and 3 virtual positions	All routine pipetting, sample and reagent transfer, real-time PCR set-up, cell-based and immunoassay set-up
5075 LH	12-position deck	
5075 VAC	11-position deck and 1 vacuum station	Walk away nucleic acid extraction with ready to go protocols Filtration & SPE, <i>in vitro</i> plasmid amplification.
5075 MC	9-position deck and 1 position for Mastercycler ep®	Fully automated PCR: Set-up and cycling



## epMotion® Applications

General Liquid Handling Applications		Product	Literature
Dilution series		epMotion 5070/5075	Eppendorf Application note 119
Reformatting of plates from 96 wells to 384 wells		epMotion 5070/5075	–
Plate replication in 24 well, 96 well, or 384 well formats		epMotion 5070/5075	–
Normalization		epMotion 5070/5075	–
Hit-picking		epMotion 5070/5075	–
Reagent transfer from reservoirs		epMotion 5070/5075	–
Low volume assay setup		epMotion 5070/5075	Eppendorf Application note 104
Pooling of samples from plates to tubes		epMotion 5070/5075	–
Genomics Applications	Sample Type	Product	Literature
Nucleic acid purification	Plasmid DNA	epMotion 5075 VAC	Eppendorf Application note 95
	BAC DNA	epMotion 5075 VAC	Eppendorf Application note 94
	PCR products	epMotion 5075 VAC	Eppendorf Application note 93
	Genomic DNA – blood	epMotion 5075 VAC	Qiagen MDX Blood kit
	Total RNA – cultured cells	epMotion 5075 VAC	Eppendorf Application note 111
	Genomic DNA – plant	epMotion 5075 LH	Eppendorf Application notes 124/126
<i>In vitro</i> plasmid amplification	Bacterial colonies	epMotion 5075 MC	Eppendorf Application note 133
Aliquoting oligonucleotide targets for array spotting	DNA samples	epMotion 5070	Human 58K oligonucleotide chip. NCBI, GEO Profiles, Platform GPL2761
Loading of 96 well agarose E-gels	DNA samples	epMotion 5070/5075	Eppendorf User Guide 6
PCR setup Applications	Sample Type	Product	Literature
Real-time PCR diagnostics of HBV and Salmonella	Plasma and stool samples	epMotion 5070/5075 LH	Eppendorf Application Note 81
Automated real-time PCR set up	Lambda DNA	epMotion 5070/5075 LH	Eppendorf Bionews 25
	mRNA	epMotion 5070	Biospektrum, 2005, 5, 678-679
	Human genomic DNA	epMotion 5070/5075 LH	Eppendorf Application Note 119
PCR setup in 384 well PCR plates	Human genomic DNA	epMotion 5070/5075 LH	Eppendorf Bionews 20
Forensic Applications	Sample Type	Product	Literature
Amplification PCR from FTA cards	Buccal-swabs	epMotion 5075 MC	Eppendorf Application note 136
Nucleic acid purification	Blood stains, swabs, cigarette butts	epMotion 5075 LH	EAFS Abstract book 2006. Application note in press.
Proteomics Applications	Sample Type	Product	Literature
Protein purification of 6xHis tagged proteins	<i>E. coli</i> cell lysates	epMotion 5075 VAC	Product manual Ni-NTA Superflow 96 BioRobot Kit (Qiagen)
Cell based assay Applications	Sample Type	Product	Literature
Baculovirus titration assay	Insect cells	epMotion 5070	BioTechniques 40:282-292 (March 2006)
ELISA Applications	Sample Type	Product	Literature
Pancreatic elastase 1 detection	Stool samples	epMotion 5070	Eppendorf Application note 138



## epMotion® 5070

### Applications

- Serial dilutions
- Reagent distribution
- Reformatting into plates
- Sample transfer from tubes to plates
- Sample normalization
- Media change for cell culture
- Real-time PCR set-up
- Cell based assay set-up
- Immunoassay set-up

### Product features

- Four microplate format positions
- Pipetting range from 1 to 1,000  $\mu$ l
- Compatible with micro- and PCR-plates
- Compatible with plates up to 384 wells
- Compatible with tubes from 0.2 to 50 ml
- Liquid level detection without conductive tips
- Optical sensor\* checks the loaded deck
- Safety hood with monitored front door
- Easy exchangeable pipetting tool
- Innovative control panel
- Optional PC control version

\* Patent pending

### 30 ml and 100 ml reagent reservoirs

- The reagent reservoirs are "PCR clean" as well as autoclavable, and they can be easily placed in the reagent rack; their special geometry minimizes residual volume and makes them ideal vessels for reagents



### Description

The epMotion 5070 is the most compact solution for accurate and reproducible automated pipetting. It is a perfect match for all routine applications as serial dilutions, reagent distribution, sample transfer from tubes to plates and sample normalization. Due to the excellent pipetting accuracy the epMotion is the recommended solution for real-time PCR. Enabling set-ups with less reagent volume and excellent reproducibility. Pipetting technology is based on the classic Eppendorf piston stroke pipettes and allows protocols previously carry out manually to be easily transferred to the epMotion 5070. Established procedures can be maintained due to the compatibility to a wide range of predefined consumables. The epMotion 5070 is equipped with the optical sensor\* which checks before every run if the required labware is correctly positioned on the deck and also for tip type and quantity available.



## epMotion® 5075 LH

### Applications

- Serial dilutions
- Reagent distribution
- Reformatting into plates
- Sample transfer from tubes to plates
- Sample normalization
- Pooling of samples
- Media change for cell culture
- Real-time PCR set-up
- Immuno- and cell-based-assay set-up
- Compound testing
- Magnetic bead applications

### Product features

- 12 microplate format positions
- Automatic exchange of all tools
- Pipetting range from 1 to 1,000 µl
- Thermal module option
- Plate gripper option
- Compatible with tubes from 0.2 to 50 ml
- Compatible with plates up to 384 wells
- Plate stacking
- Optical sensor\* checks the loaded deck
- Detection of tip size and tip quantity
- Safety hood with monitored front door
- Innovative control panel
- Optional PC control version
- Modular system: Upgrade to 5075 VAC and 5075 MC possible
- Liquid level detection without carbonized tips

\* Patent pending



### Description

The epMotion 5075 LH is the solution for advanced liquid handling procedures. It offers the same outstanding accuracy and precision as the epMotion 5070 making it an ideal tool for demanding small volume applications as real time PCR set-up, magnetic bead purification and all routine pipetting tasks.

The 12 position deck and the automatic tool exchange expand the application range to complex patterns and higher sample numbers. With the heating and cooling and the gripper option the epMotion 5075 LH is the most flexible and adaptable automated pipetting system.

### Thermoblock for PCR plates

- Thermal block holds 96- or 384-well PCR plates



### Reservoir rack with tube modules

- Individually configured and temperature controlled.



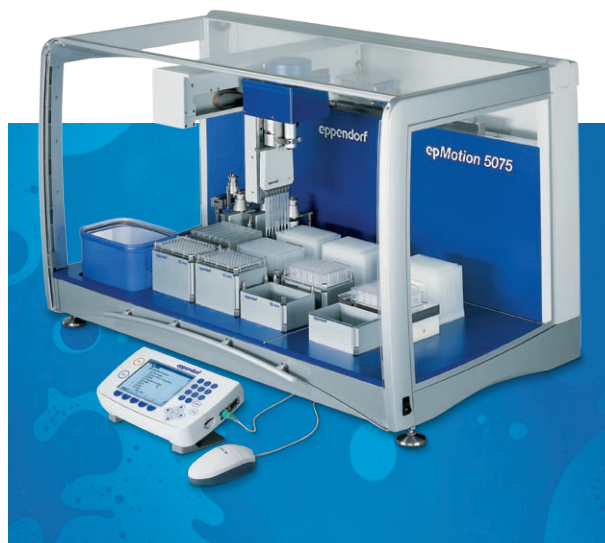
## epMotion® 5075 VAC

### Applications

- Same as 5075 LH plus
- Vacuum purification applications
- Solid phase extraction
- Filtration
- Predefined and tested methods for:
  - Plasmid and BAC purification
  - gDNA from blood and tissue
  - gDNA from plants
  - Sequencing and PCR clean-up
  - Total RNA

### Product features

- Same as 5075 LH plus
- Eleven microplate format positions
- One vacuum position
- Integrated vacuum pump
- Vacuum is fully software controlled
- Universal spring loaded vacuum frame
- Plug-n-Prep, validated protocols



### Description

Tedious and complex applications such as nucleic acid purification should not tie lab personnel to the workbench. The epMotion 5075 VAC allows true walk away automation of purification protocols based on the robust and reliable vacuum technology.

Tested protocols are available for most standard applications such as plasmid DNA, genomic DNA and RNA purification. The protocols are predefined and the system set-up takes only a few minutes. Additional customized applications can be developed easily using the control panel or the optional epMotion PC software .

The unique Eppendorf silicon mat saves time and money. It allows you to use portions of a 96 well plate when working with smaller sample numbers. The VAC Thermo lid reduces the extraction time substantially by accelerating the ethanol evaporation step.

### Integrated vacuum station

- Compact system with a completely integrated vacuum chamber and pump



### Labware handling

- Use of a gripper for automated reconfiguration of the vacuum chamber and transport of plates



## epMotion® 5075 MC

### Applications

- Same as 5070 LH plus
- Fully automated sample preparation and subsequent amplification in the Mastercycler ep
- Automated PCR and RT-PCR in 96-/384-well plate format
- Automated sequencing reactions in 96-/384-well plate format
- *In vitro* plasmid amplification
- Automated DNA extraction and profiling of forensic FTA® samples

### Product features

- Same as 5075 LH plus
- 9 microplate format positions
- Integrated Mastercycler ep gradient with motorized lid
- 96- or 384- well PCR block options
- Robust, high-quality aluminum block or silver block for highest speed
- Integrated Mastercycler ep software
- Unique cycle-lock silicon sealing system
- Simultaneous PCR reaction and liquid handling possible



Practice of the patented polymerase chain reaction (PCR) process requires a license. The Mastercycler is an Authorized Thermal Cycler and may be used with PCR licenses available from Applied Biosystems. Its use with Authorized Reagents also provides a limited PCR license in accordance with the label rights accompanying such reagents.

### Ready to go

- The Mastercycler ep and epMotion 5075 are perfectly compatible, e.g., for direct filling of 384-well plates in the thermal block



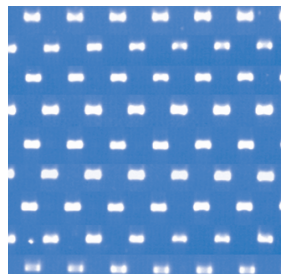
### Description

The epMotion 5075 MC combines sample preparation and PCR in an enclosed system and enables automated walk away amplification reactions. This version can be equipped with all motorized lid models of the Eppendorf Mastercycler ep line of thermal cyclers.

The cycler software is integrated in the epMotion software so both system components can easily be programmed with the same innovative control panel. Worktable positions can be used for liquid handling protocols while the cycler is running.

### Dispensing without cross-contamination

- Amplification of the 535 bp fragment of the human  $\beta$ -globin gene in 384-well format every other well contains a negative control in a checkerboard pattern



epMotion® automated pipetting system accessories



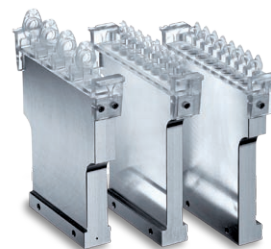
**Dispensing tools**

- Six dispensing tools from 1 µl to 1,000 µl are available: 3 single-channel and 3 multichannel (see accessories, page 50).



**Reservoir rack**

- For holding up to 7 reservoir rack modules or reagent reservoirs. Temperature controlled when used with a thermal module.



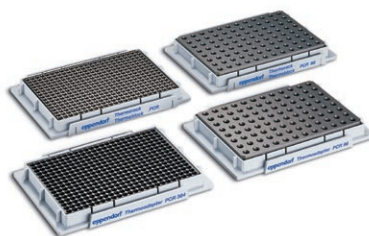
**Reservoir rack modules TC**

- Modules for the reservoir rack. Seven module sizes are available to use tubes from 0.2 ml PCR to 50ml tubes. Temperature controlled when used with a thermal module.



**Height adapter**

- Various height adapters allow exact height level adjustment and accelerated processing of PCR and deepwell plates.



**Thermoracks and adapter**

- For use with 96-well or 384-well plates and single 0.2 ml tubes. Temperature controlled when used with a thermal module.



**Thermoadapter DWP 96**

- For heating or cooling of deep well plates. Plates can be exchanged by the gripper.



**Thermoracks for 24x Safe-Lock 0.5 ml/1.5 ml/2.0 ml tubes**

- Temperature controlled when used with a thermal module



**Racks for single test tubes**

- For glass or plastic micro test tubes



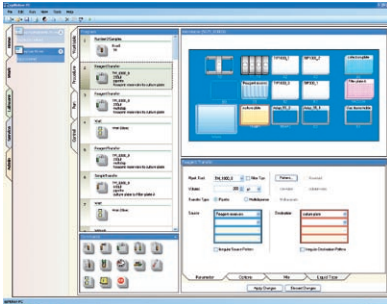
**Gripper for epMotion 5075**

- For the transport of plates on the deck, sealing of plates with CycleLock and for automatic operation of the vacuum manifold



## epBlue – epMotion® PC software

**NEW!**

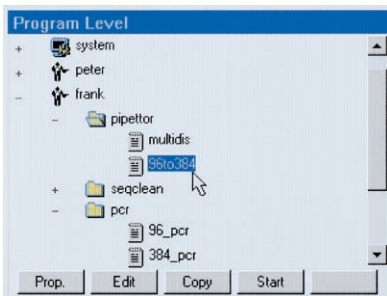


### Product features

- Graphical user interface
- Home section with direct access to main functions
- 3D worktable display and run simulation
- E-mail notification
- User management with password protection
- Import of files for normalization and hit picking
- Printing and archiving of log files
- ActiveX- interface
- Preinstalled on epMotion PC models

Simple and clear. epBlue takes you through your everyday pipetting tasks: Choose your objective in the home section and follow the epBlue commands from left to right with innovative guiding menus. Pipetting pattern recognition, labware database and liquid classes make time consuming procedures a breeze to program. Simply set-up your worktable, select the pipetting commands, simulate and launch. Operating and programming epBlue is easy and fast.

## epMotion® Control panel software

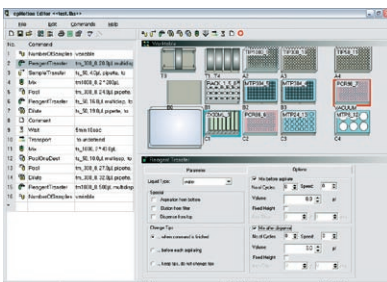


### Product features

- LC color display
- Interfaces for Keyboard and Mouse
- Graphical user interface
- Drag and drop programming
- Windows explorer style organization
- User Management
- Run reports
- MMC card for backups
- Software preinstalled on the control panel

The control panel enables programming and control of the epMotion in an ultra-compact design without the need for an additional PC or monitor. All typical epMotion functions that make programming easy, such as pipetting pattern recognition, labware database and liquid classes, are included in the control panel software.

## epMotion® Editor



### Product features

- Graphical user interface
- Programming functions analogous to the control panel software
- Print function
- Archiving function
- Import of files for normalization and hit picking

Off line PC software for epMotion. With the PC Editor methods can be generated and edited on a PC. Data is transferred to the epMotion control panel via the MMC card.

## epMotion® Performance Plans



### Value of Preventive Maintenance

Preventive maintenance is a schedule of planned service, designed to check your system and preserve its maximum-performance quality.

Preventive maintenance service for epMotion 5070 and epMotion 5075, performed by our dedicated, Eppendorf professionally trained service technicians, includes inspection, cleaning, lubricating, partial overhauls, calibration and any necessary adjustments according to system specifications. Our Performance Plans consists of two audits per year.

Dispensing tools are precision devices. For this reason they should be regularly maintained and calibrated, which will help ensure their continuing high performance in precision and accuracy.

Calibration of the dispensing tools can be performed according to ISO 8655 with NIST-traceable standards supporting GLP documentation.



● Calibration of dispensing tool (gravimetric), Thermal Module and vacuum chamber

Performance Plans (1-year contract)	epMotion 5070 BASIC	epMotion 5070 STANDARD	epMotion 5070 PREMIUM	
<b>Order no.</b>	5070 005.001	5070 005.010	5070 005.028	
Cleaning and lubricating the device and components	●	●	●	
Mechanical inspection and adjustment, if necessary	●	●	●	
Software update (upon customer request)	●	●	●	
Replacement of all dispensing tool seals	●	●	●	
Function test and calibration of level sensor and carrier on all models; plus vacuum chamber of epMotion 5075 Vac	●	●	●	
Function test according to service test methods	●	●	●	
Full documentation	●	●	●	
Function test according to Operation Qualification (OQ)	●	●	●	
OQ Certificate	●	●	●	
Charge for replacement parts	●	●	●	
Cost for all replaced parts included			●	
Warranty extension			12 months	
Visits per plan year	2	2	2	

Additional service	Order no.
Calibration of single-channel dispensing tool	5070 005.036
Calibration of 8-channel dispensing tool	5070 005.044
Calibration of each Thermal Module (epMotion 5075 only)	5075 005.018





## epMotion® automated pipetting system

Technical specification		5070	5075 LH	5075 VAC	5075 MC
<b>Surface</b>					
System:	Width	98 cm	140 cm	140 cm	140 cm
	Depth	75 cm	75 cm	75 cm	75 cm
<b>Dimensions</b>					
Device:	Width	65 cm	107 cm	107 cm	107 cm
	Depth	48 cm	61 cm	61 cm	61 cm
	Height	63 cm	67 cm	67 cm	67 cm
Control Panel:	Width	25 cm	25 cm	25 cm	25 cm
	Depth	15 cm	15 cm	15 cm	15 cm
	Height	11 cm	11 cm	11 cm	11 cm
<b>Weight</b>					
Device:		45 kg	85 kg	90 kg	102 kg
Control panel:		1.2 kg	1.2 kg	1.2 kg	1.2 kg
<b>Power supply</b>					
Voltage:		200–240 V ± 10%	200–240 V ± 10%	200–240 V ± 10%	200–240 V ± 10%
Frequency:		50–60 Hz ± 5%	50–60 Hz ± 5%	50–60 Hz ± 5%	50–60 Hz ± 5%
Max. output:		80 W	1,000 W	1,000 W	1,000 W
<b>Dispensing tools</b>					
Volume:	1 µl				
Systematic measurement error		± 10%	± 10%	± 10%	± 10%
Random measurement error		≤ 5%	≤ 5%	≤ 5%	≤ 5%
Volume:	50 µl				
Systematic measurement error		± 0.8%	± 0.8%	± 0.8%	± 0.8%
Random measurement error		≤ 0.4%	≤ 0.4%	≤ 0.4%	≤ 0.4%
Volume:	1,000 µl				
Systematic measurement error		± 0.6%	± 0.6%	± 0.6%	± 0.6%
Random measurement error		≤ 0.2%	≤ 0.2%	≤ 0.2%	≤ 0.2%
Measurement error in pipetting mode, free jet, without prewetting, with distilled water, at 20 °C					
<b>Conductor</b>					
X, Y, Z Positioning:					
Systematic measurement error		±0.3 mm	±0.3 mm	±0.3 mm	±0.3 mm
Random measurement error		±0.1 mm	±0.1 mm	±0.1 mm	±0.1 mm
Positions in MTP-Format:		4	12	11	9
<b>Detector</b>					
Optical confocal infrared detector:		contact-free detection of liquid level, tools used, labware deck, tip types and quantities			
Optical sensor:*		liquid surface must be 90 ±3° to the vertical plane of the optical sensor			
<b>Gripper</b>					
Carrying capacity:		–	≤ 1,200 g	≤ 1,200 g	≤ 1,200 g
<b>Vacuum unit</b>					
Max. output:		–	–	35 L/min	–
Suction range:		–	–	0.1–0.85 ± 0.05 hPa	–
Suction time:		–	–	1–99 min	–

\* Patent pending



## epMotion® automated pipetting system

Technical specifications	5070	5075 LH	5075 VAC	5075 MC
<b>Cycler unit</b>				
Heat-cooling unit:	–	–	–	96 Al, 96 Ag, 384 Al
<b>Tempering unit (optional)</b>				
Setting range:	–	0–110 °C	0–110 °C	0–110 °C
Heating time of the heating/cooling plate:	–	from 25–95 °C in 8 min	from 25–95 °C in 8 min	from 25–95 °C in 8 min
Cooling time of the heating/cooling plate:	–	from 25–4 °C in 5 min	from 25–4 °C in 5 min	from 25–4 °C in 5 min
<b>Software</b>				
Operating software:	MotionManager v2.0 or higher; Firmware: MotionInstrument v2.0 or higher			

### Ordering information

Description	Order no.
<b>epMotion – automated pipetting systems</b>	
<b>epMotion 5070</b> , basic device includes control panel, software, optical sensor, waste container, MMC and reader, operating instructions, 200–240 V, 50–60 Hz	5070 000.000
<b>epMotion 5075 LH</b> , (liquid handling)	5075 000.008
<b>epMotion 5075 VAC</b> , (includes vacuum station)	5075 000.016
<b>epMotion 5075 MC</b> , (Mastercycler® ep not included)	5075 000.032
<b>epMotion with integrated PC</b>	
<b>epMotion 5070 with integrated PC</b> , as 5070 000.000 plus integrated industrial PC, keyboard and mouse	5070 000.140
<b>epMotion 5075 LH with integrated PC</b> , as 5075 000.008 plus integrated industrial PC, keyboard and mouse	5075 000.750
<b>epMotion 5075 VAC with integrated PC</b> , as 5075 000.016 plus integrated industrial PC, keyboard and mouse	5075 000.768
<b>epMotion 5075 MC with integrated PC</b> , as 5075 000.032 plus integrated industrial PC, keyboard and mouse	5075 000.776
<b>Monitor</b> , 19" TFT monitor to be used with epMotion versions with integrated PC	5075 001.250
<b>epBlue – epMotion PC software</b> , operating software for epMotion versions with integrated PC, preinstalled	5075 016.001
<b>Upgrade and Retrofit Sets</b>	
<b>MC</b> , for retrofitting an LH version into an MC version	5075 000.601
<b>VAC</b> , for retrofitting an LH version into a VAC version	5075 000.610
<b>Software and Hardware Upgrade Set 1</b> , Upgrade kit for epMotion 5075 with serial numbers < 1,000	5075 851.440

OEM components of the epMotion can be placed at the disposal of developers and manufacturers of similar devices as a basic module on request. Please contact our Customized Solutions department. (see page 257)



## epMotion® automated pipetting system

### Ordering information

Description	Order no.
<b>Dispensing tools</b>	
Highly precise pipetting heads, for use in the tool holder of the epMotion workstation. Each dispensing tool is completely autoclavable at 121 °C, 1 bar for 20 min. A quality certificate for the measurement results accompanies each tool.	
<b>TS 50</b> , single-channel dispensing tool for the volume range from 1–50 µl	5280 000.010
<b>TS 300</b> , single-channel dispensing tool for the volume range from 20–300 µl	5280 000.037
<b>TS 1000</b> , single-channel dispensing tool for the volume range from 40–1,000 µl	5280 000.053
<b>TM 50-8</b> , 8-channel dispensing tool for the volume range from 1–50 µl	5280 000.215
<b>TM 300-8</b> , 8-channel dispensing tool for the volume range from 20–300 µl	5280 000.231
<b>TM 1000-8</b> , 8-channel dispensing tool for the volume range from 40–1,000 µl	5280 000.258
<b>Holder</b> , for 6 dispensing tools	5075 774.003
<b>epT.I.P.S. Motion pipette tips</b>	
Pipette tips for automated systems in individual racks, for use with the epMotion. Tip type and size are automatically recognized on the device. 96 epT.I.P.S./rack, 15 racks per set. Two purity levels: without filter = Eppendorf Quality, Filtertips = PCR clean (free of human DNA, DNase, RNase and PCR inhibitors). Production batch-tested, certified.	
<b>Without filter</b> , Eppendorf Quality	
50 µl, volume range 1–50 µl, 15 x 96 tips in racks	0030 003.942
300 µl, volume range 20–300 µl, 15 x 96 tips in racks	0030 003.969
1,000 µl, volume range 40–1,000 µl, 15 x 96 tips in racks	0030 003.985
<b>Filtertips</b> , PCR clean	
50 µl, volume range 1–50 µl, 15 x 96 Filtertips in racks	0030 003.950
300 µl, volume range 20–300 µl, 15 x 96 Filtertips in racks	0030 003.977
1,000 µl, volume range 40–1,000 µl, 15 x 96 Filtertips in racks	0030 003.993
<b>Accessories</b>	
<b>Reservoir rack</b> , for use with 30 ml and 100 ml reagent reservoirs, holds max. seven reservoirs of 30 ml or 100 ml filling volumes	5075 754.002
<b>epMotion reservoir</b>	
Large volume reservoir, must be used with a reservoir rack. Two sizes: 30 ml or 100 ml maximum volume. Five reservoirs packed in separate bags, 10 bags per set. All reservoirs are PCR clean (free of human DNA, DNase, RNase and PCR inhibitors) and made of polypropylene. Production batch-tested, certified.	
30 ml, set of 50	0030 126.505
100 ml, set of 50	0030 126.513
<b>Reservoir rack modules</b>	
Reservoir rack modules are inserted in a Reservoir rack. They can be temperature controlled with a thermal module for heating and cooling.	
<b>PCR 0.2 ml</b> , for 8 x 0.2 ml PCR tubes	5075 799.049
<b>PCR 0.5 ml</b> , for 8 x 0.5 ml PCR tubes	5075 799.065
<b>Safe Lock</b> , for 4 x 0.5/1.5/2 ml tubes	5075 799.081
<b>Tubes Ø12 mm</b> , for 4 x Ø12 mm tubes	5075 799.103
<b>Tubes Ø16 mm</b> , for 4 x Ø16 mm tubes	5075 799.120
<b>15 ml Tubes "Blue Cap"</b> , for 4 x Ø17 mm tubes	5075 799.162
<b>50 ml Tubes "Blue Cap"</b> , for 2 x Ø29 mm tubes	5075 799.189
<b>Reservoir adapter 30 ml</b> , for 1 x epMotion reservoir 30 ml	5075 799.146
<b>Reservoir adapter 100 ml</b> , for 1 x epMotion reservoir 100 ml	5075 799.260



## epMotion® automated pipetting system

### Ordering information

Description	Order no.
<b>Racks</b>	
For 24 glass or plastic tubes, no temperature control	
Ø 17 mm x 100 mm max. length	5075 761.009
Ø 17 mm x 60 mm max. length	5075 775.000
Ø 16 mm x 100 mm max. length	5075 760.002
Ø 16 mm x 60 mm max. length	5075 776.006
Ø 15 mm x 100 mm max. length	5075 792.028
Ø 15 mm x 60 mm max. length	5075 792.044
Ø 14 mm x 100 mm max. length	5075 792.001
Ø 14 mm x 60 mm max. length	5075 792.060
Ø 13 mm x 100 mm max. length	5075 762.005
Ø 13 mm x 60 mm max. length	5075 792.087
Ø 12 mm x 100 mm max. length	5075 763.001
Ø 12 mm x 60 mm max. length	5075 792.109
<b>Rack for 24 x HPLC tubes, Ø 12 mm x 40 mm max. length</b>	5075 792.125
<b>Rack for 96 x 1.5/2.0 ml screw-cap</b> Requires two positions on the deck	5075 791.005
<b>Height adapter</b>	
For uniform levels of labware; enables faster processing of the plate	
85 mm	5075 751.003
55 mm	5075 752.000
40 mm (for epT.I.P.S. Motion pipette tips)	5075 755.009
<b>Accessories for epMotion 5070/5075</b>	
<b>epMotion Editor</b> , includes editor key, software package for creating and editing methods and for printing out and archiving program sequences on a PC	5075 014.009
<b>epMotion Editor</b> , additional license	5075 015.200
<b>MultiMediaCard</b> , for archiving parameters and transporting data between control panel and PC	5075 780.003
<b>Waste container</b> , receptacle for used pipette tips, with lid	5075 753.006
<b>Thermorack for 24 x 0.5 ml Safe-Lock tubes</b> , for a supply of 24 test tubes, temperature control	5075 769.000
<b>Thermorack for 24 x 1.5 ml/2 ml Safe-Lock tubes</b> , for a supply of 24 test tubes, temperature control	5075 771.004
<b>Thermoadapter for Deep Well Plates 96</b>	5075 751.054
<b>Adapter sleeves</b> , 1 set = 25 pieces for reconfiguration of the thermo rack (1.5 ml/2.0 ml) for use with 0.5 ml tubes	5075 772.000
<b>Panel plate</b> , for control panel	5075 798.000



## epMotion® automated pipetting system

### Ordering information

Description	Order no.
<b>Accessories for PCR/real-time PCR</b>	
<b>Rack Smart</b> , for holding one tube rack of SmartCycler® reaction tubes	5075 790.009
<b>Rack LC 20 µl/100 µl</b> , for holding up to 96 x 20 µl or 100 µl LightCycler® capillaries, for use with, e.g., Centrifuge 5804/5804 R or 5810/5810 R, set of 2	5075 795.000
<b>Thermorack CB 100 µl</b> , for holding up to 384 x 0.1 ml strip tubes in the Corbett Research Rotor-Gene™ 3000	5075 767.031
<b>Thermoadapter for PCR plates, 96-well, skirted</b> , for heating or cooling of PCR plates; plates are exchangeable using the gripper	5075 787.008
<b>Thermoadapter for PCR plates, 384-well, skirted</b> , for heating or cooling of PCR plates; plates are exchangeable using the gripper	5075 788.004
<b>Thermoadapter Frosty</b> , combination of height adapter and PCR-Cooler for cooling of skirted PCR plates	5075 789.000
<b>Thermoblock for PCR plates, 96-well</b> , for use with 96 x 0.2 ml tubes or a PCR plate 96	5075 766.000
<b>Thermoblock for PCR plates, 384-well</b> , for use with a PCR plate 384	5075 767.007
<b>CycleLock starter set</b> , 1 frame and 8 mats for automated sealing of Eppendorf® PCR plates, PCR clean; can only be used with Mastercycler® ep	0030 126.530
<b>CycleLock mats</b> , 5 sealing mats, PCR clean, frame not included	0030 126.548
<b>Accessories for nucleic acid purification</b>	
<b>Vac frame holder</b>	5075 778.009
<b>Vac lid</b>	5075 779.005
<b>Mat</b> , for vacuum lid	5075 793.008
<b>Vac frame 1</b>	5075 784.009
<b>Vac frame 2</b>	5075 785.005
<b>Collection Plate Adapter</b> , for handling collection microtubes in microtube racks	5075 785.030
<b>Channeling Plate Adapter</b> , for vacuum-processing foaming solutions through multiwell plates, set of 10	5075 794.004
<b>Vac Thermo Lid</b> , for effective drying of filter plates in epMotion 5075 VAC vacuum chamber Note: additional thermal module required	5075 796.007
<b>Accessories for epMotion 5075 only</b>	
<b>Thermal module</b> , for heating and cooling microplates and thermal racks	5075 757.001
<b>Gripper</b> , for transporting plates on the deck and for automatic operation of the vacuum chamber	5282 000.018
<b>Gripper holder</b>	5075 759.004

